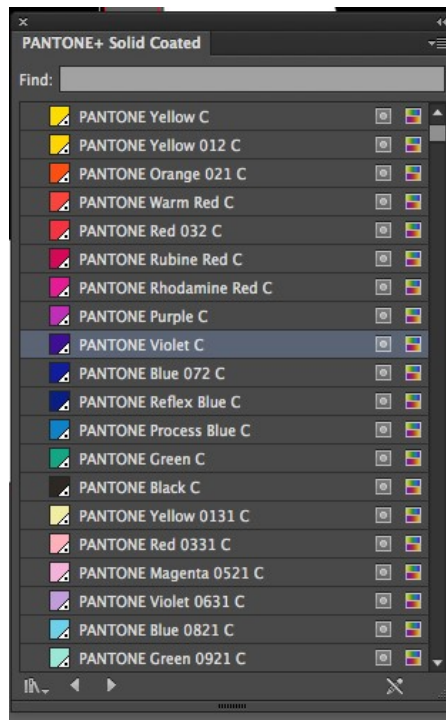
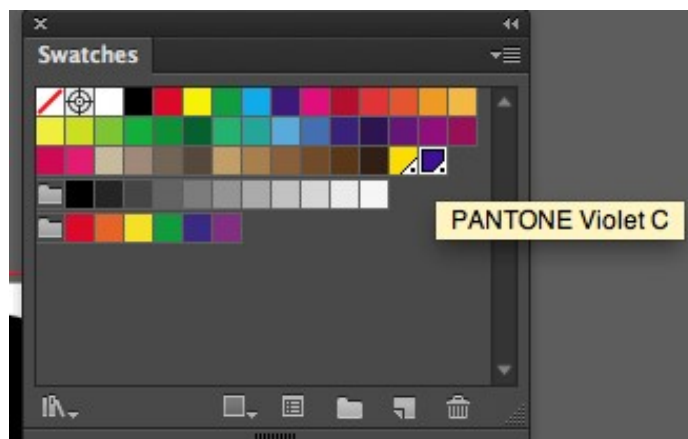


Artwork Set Up For Spot White Printing On A Digital Press

1. When creating the White plate (using your page layout program eg: Illustrator, InDesign), make a spot colour named 'White' (case sensitive) as a fifth colour with a breakdown of cyan 50% and magenta 100%.
2. Open your Pantone Swatch Library - Example here is PANTONE Violet C

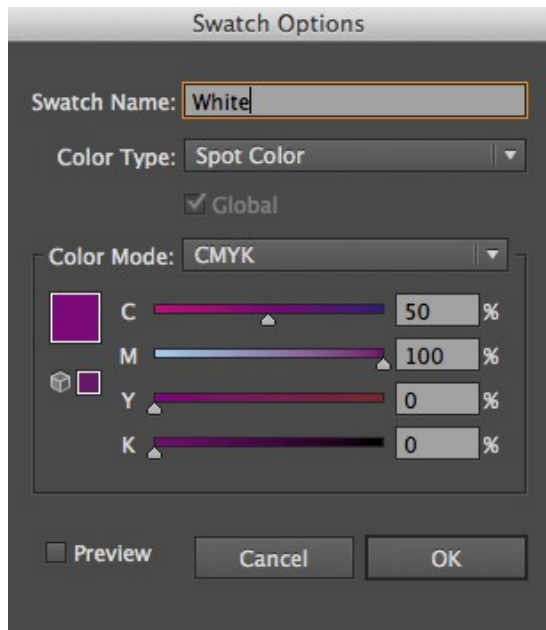


3. Double click swatch to change break down etc.. Example here is PANTONE Violet C

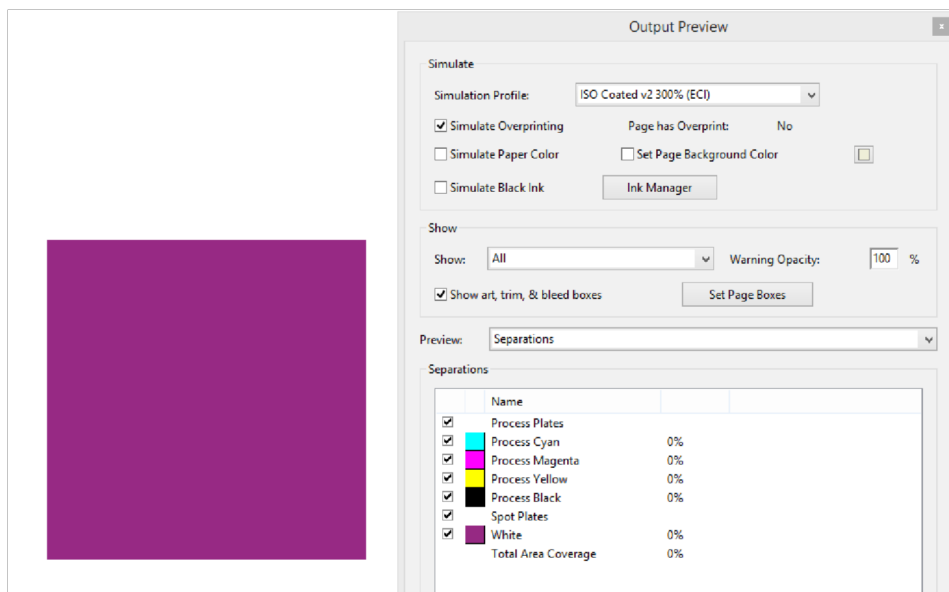


Artwork Set Up For Spot White Printing On A Digital Press Workflow

4. Make a spot colour named 'White' (case sensitive) as a fifth colour with a breakdown of cyan 50% and magenta 100%.

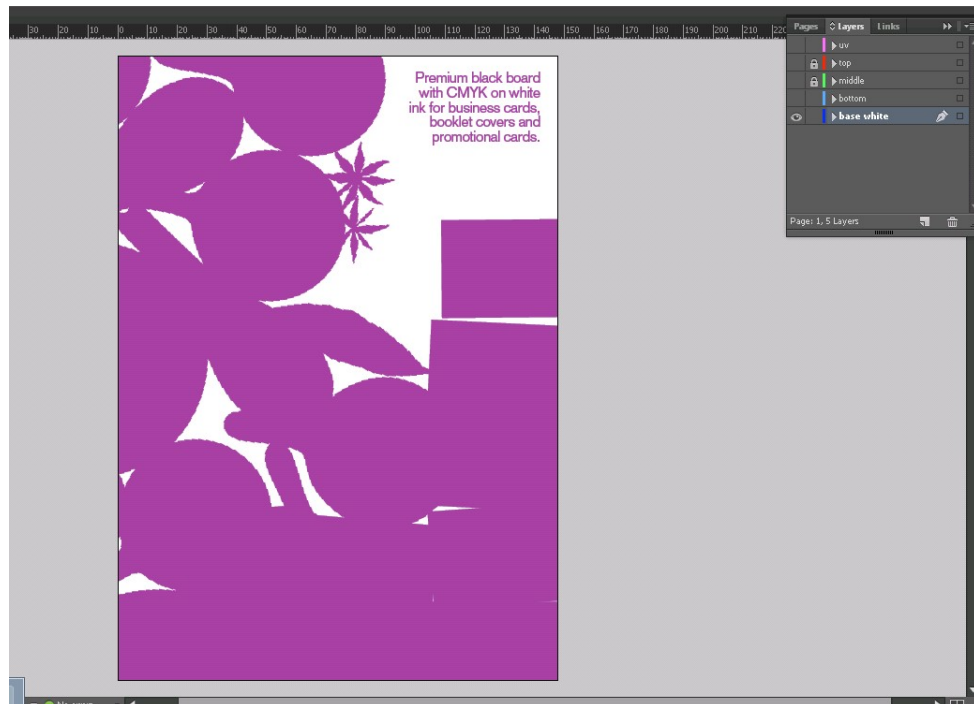


5. See below example of how swatch will appear in Acrobat.

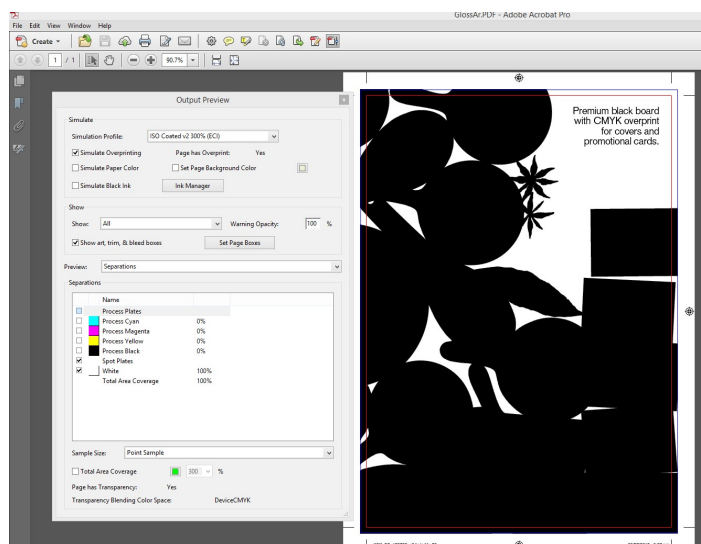


Artwork Set Up For Spot White Printing On A Digital Press Workflow

6. Create a duplicate layer (note the layer is called 'base white' in this example) which contains a COPY of all the elements and colour those with the special named spot colour White. Also note the white layer is on the bottom.

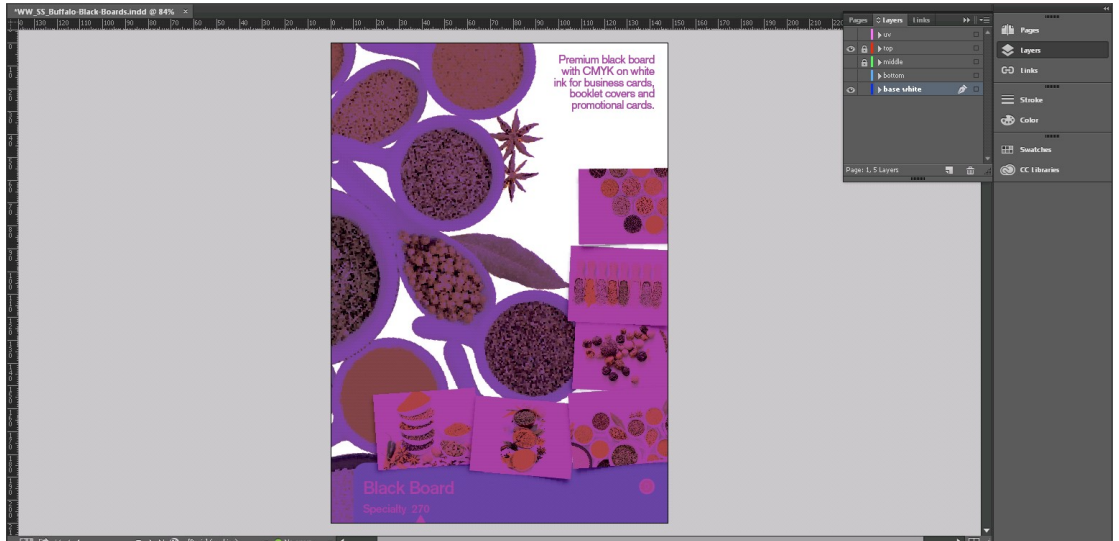


7. All elements to be printed White must be coloured 100% of the spot colour and White MUST NOT overprint (the below image is being viewed in Acrobat with all other colours turned off).



Artwork Set Up For Spot White Printing On A Digital Press Workflow

- White must be the bottom layer underneath all other separations, and all other separations MUST overprint it and not knock it out (see below).



- Create the final output file (eg: PDF) using approved distiller settings.

